

## Catalog

|                      |   |
|----------------------|---|
| IMF-150-2E.pdf ..... | 1 |
| IMF-200-2E.pdf ..... | 2 |
| IMF-250-VO.pdf ..... | 3 |
| IMF-315-VO.pdf ..... | 4 |



# IMF-150-2E

## INLINE MIXED FLOW FANS



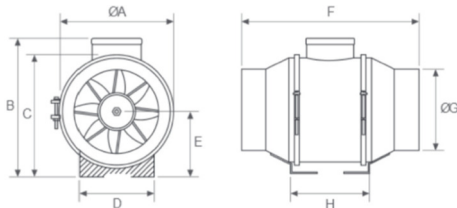
### FAN FEATURES

- INLINE MIX FLOW FAN.
- CAPABLE OF HANDLING UP TO 165 L/s.
- USED FOR FOOD VANS APPLICATIONS AND GENERAL VENTILATION.
- ALL METAL CONSTRUCTION.
- SPEED CONTROLLABLE.
- EASY TO MAINTAIN
- FULL COMPLIANCE WITH AUSTRALIAN STANDARDS AIRFLOW TEST TO BS848 PART 1 & NOISE TEST TO BS848 PART 2

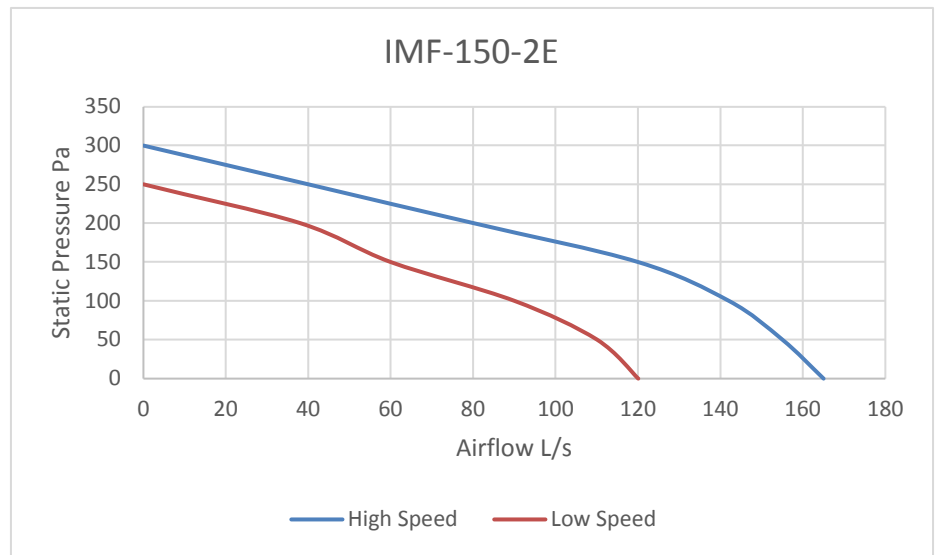
### DIMENSIONS

| ØA  | B   | C   | D   |
|-----|-----|-----|-----|
| 147 | 242 | 213 | 130 |

| E   | F   | ØG  | H   |
|-----|-----|-----|-----|
| 114 | 319 | 146 | 142 |



### PERFORMANCE



### SOUND DATA

| Model           | Octave Band Frequency Lw db (A) |     |     |     |    |    |    |    | Lw dB (A) | SPL dB (A) @3m |
|-----------------|---------------------------------|-----|-----|-----|----|----|----|----|-----------|----------------|
|                 | 63                              | 125 | 250 | 500 | 1K | 2K | 4K | 8K |           |                |
| IMF-150-2E High | 50                              | 47  | 48  | 44  | 41 | 39 | 32 | 25 | 54        | 33             |
| IMF-150-2E Low  | 45                              | 42  | 45  | 40  | 37 | 36 | 28 | 20 | 50        | 29             |

### TECHNICAL DATA

| Fan Model             | RPM  | 1 Phase KW | 240V Amps | 3 Phase KW | 415V Amps | dba @3M |
|-----------------------|------|------------|-----------|------------|-----------|---------|
| IMF-150-2E High Speed | 2500 | 0.05       | 0.22      |            |           | 33      |
| IMF-150-2E Low Speed  | 1950 | 0.04       | 0.19      |            |           | 29      |



**ECO DYNAMIC  
FANS PTY LTD**

www.ecodynamicfans.com.au

296 South Gippsland Hwy,  
Dandenong South VIC 3175

P: 03 8578 5911

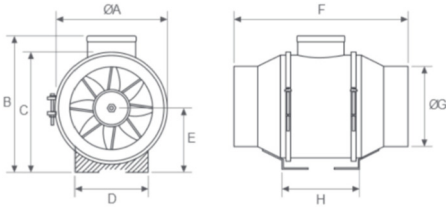
E: sales@ecodynamicfans.com.au

F: 03 8768 8529



# IMF-200-2E

## INLINE MIXED FLOW FANS



### FAN FEATURES

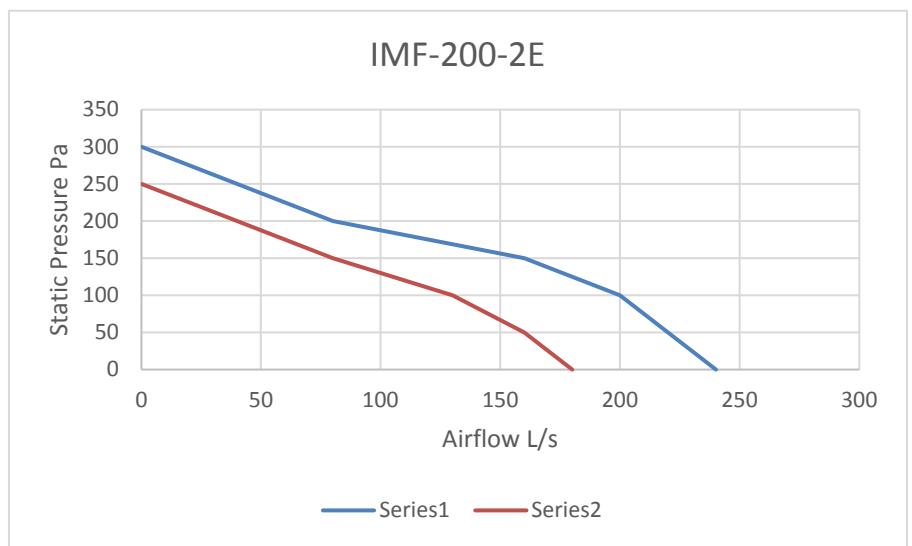
- INLINE MIX FLOW FAN.
- CAPABLE OF HANDLING UP TO 240 L/s.
- USED FOR FOOD VANS APPLICATIONS AND GENERAL VENTILATION.
- ALL METAL CONSTRUCTION.
- SPEED CONTROLLABLE.
- EASY TO MAINTAIN
- FULL COMPLIANCE WITH AUSTRALIAN STANDARDS AIRFLOW TEST TO BS848 PART 1 & NOISE TEST TO BS848 PART 2

### DIMENSIONS

| ØA  | B   | C   | D  |
|-----|-----|-----|----|
| 197 | 247 | 212 | 94 |

| E   | F   | ØG  | H   |
|-----|-----|-----|-----|
| 124 | 302 | 198 | 120 |

### PERFORMANCE



### SOUND DATA

| Model           | Octave Band Frequency Lw db (A) |     |     |     |    |    |    |    | Lw dB (A) | SPL dB (A) @3m |
|-----------------|---------------------------------|-----|-----|-----|----|----|----|----|-----------|----------------|
|                 | 63                              | 125 | 250 | 500 | 1K | 2K | 4K | 8K |           |                |
| IMF-200-2E High | 28                              | 49  | 52  | 62  | 66 | 52 | 56 | 49 | 68        | 47             |
| IMF-200-2E Low  | 27                              | 39  | 41  | 57  | 55 | 51 | 51 | 57 | 62        | 41             |

### TECHNICAL DATA

| Fan Model             | RPM  | 1 Phase KW | 240V Amps | 3 Phase KW | 415V Amps | dba @3M |
|-----------------------|------|------------|-----------|------------|-----------|---------|
| IMF-200-2E High Speed | 2450 | 0.128      | 0.57      |            |           | 47      |
| IMF-200-2E Low Speed  | 1950 | 0.123      | 0.52      |            |           | 41      |



**ECO DYNAMIC  
FANS PTY LTD**

www.ecodynamicfans.com.au

296 South Gippsland Hwy,  
Dandenong South VIC 3175

P: 03 8578 5911

E: sales@ecodynamicfans.com.au

F: 03 8768 8529



# IMF-250-VO

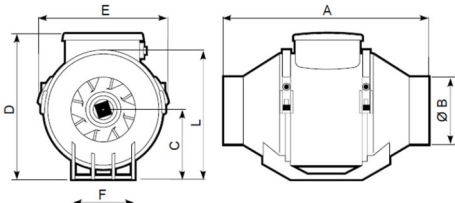
## INLINE MIXED FLOW FANS



### FAN FEATURES

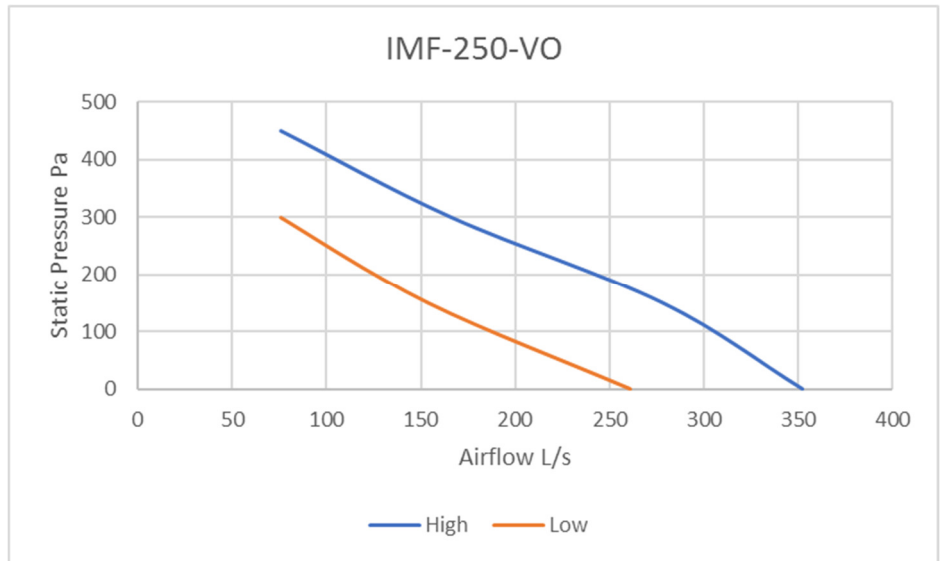
- INLINE MIX FLOW FAN
- CAPABLE OF HANDLING UP TO 350 I/S
- USED FOR AND GENERAL VENTILATION.
- SPEED CONTROLLABLE.
- EASY TO MAINTAIN
- CIRCULAR CONNECTION COMPLETE WITH MATCHING FLANGE.
- FULL COMPLIANCE WITH AUSTRALIAN STANDARDS AIRFLOW TEST TO BS848 PART 1 & NOISE TEST TO BS848 PART 2

### DIMENSIONS



| A   | ØB  | C     | D   | E   | F     | L   |
|-----|-----|-------|-----|-----|-------|-----|
| 385 | 247 | 152.5 | 317 | 300 | 176.5 | 292 |

### PERFORMANCE



### SOUND DATA

| Model         | Octave Band Frequency Lw db (A) |     |     |     |    |    |    |    | Lw dB (A) | SPL dB (A) @3m |
|---------------|---------------------------------|-----|-----|-----|----|----|----|----|-----------|----------------|
|               | 63                              | 125 | 250 | 500 | 1K | 2K | 4K | 8K |           |                |
| IMF-250-VO-HI | 0                               | 68  | 73  | 76  | 75 | 72 | 63 | 55 | 80        | 59             |
| IMF-250-VO-LO | 0                               | 60  | 63  | 66  | 65 | 66 | 60 | 57 | 72        | 51             |

### TECHNICAL DATA

| Fan Model     | RPM  | 1 Phase KW | 240V Amps | 3 Phase KW | 415V Amps | dba @3M |
|---------------|------|------------|-----------|------------|-----------|---------|
| IMF-250-VO-HI | 2550 | 0.18       | 0.78      |            |           | 59      |
| IMF-250-VO-LO | 1900 | 0.11       | 0.48      |            |           | 51      |



**ECO DYNAMIC FANS PTY LTD**

296 South Gippsland Hwy,  
Dandenong South VIC 3175

P: 03 8578 5911

E: sales@ecodynamicfans.com.au

F: 03 8768 8529

www.ecodynamicfans.com.au



# IMF-315-VO

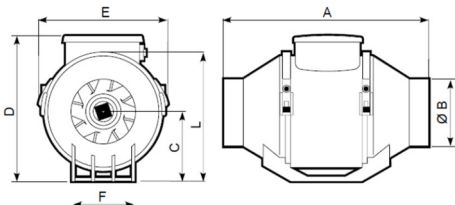
## INLINE MIXED FLOW FANS



### FAN FEATURES

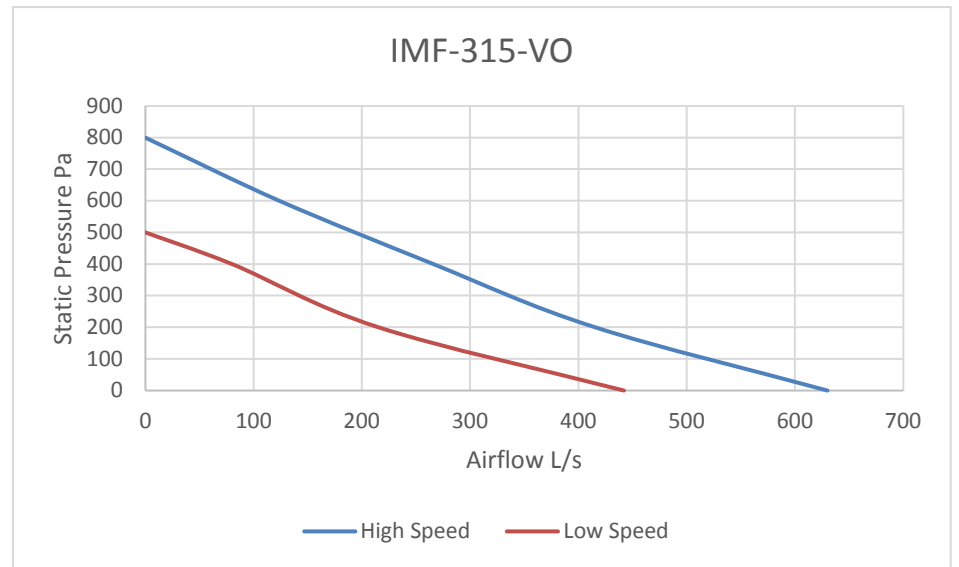
- INLINE MIX FLOW FAN
- CAPABLE OF HANDLING UP TO 630 I/S
- USED FOR AND GENERAL VENTILATION.
- SPEED CONTROLLABLE.
- EASY TO MAINTAIN
- CIRCULAR CONNECTION COMPLETE WITH MATCHING FLANGE.
- FULL COMPLIANCE WITH AUSTRALIAN STANDARDS AIRFLOW TEST TO BS848 PART 1 & NOISE TEST TO BS848 PART 2

### DIMENSIONS



| A   | ØB  | C     | D     | E     | F     | L   |
|-----|-----|-------|-------|-------|-------|-----|
| 448 | 312 | 188.5 | 392.5 | 361.5 | 220.5 | 359 |

### PERFORMANCE



### SOUND DATA

| Model         | Octave Band Frequency Lw db (A) |     |     |     |    |    |    |    | Lw dB (A) | SPL dB (A) @3m |
|---------------|---------------------------------|-----|-----|-----|----|----|----|----|-----------|----------------|
|               | 63                              | 125 | 250 | 500 | 1K | 2K | 4K | 8K |           |                |
| IMF-315-VO-Hi | 0                               | 69  | 75  | 75  | 78 | 73 | 65 | 57 | 83        | 61             |
| IMF-315-VO-Lo | 0                               | 59  | 65  | 65  | 67 | 60 | 65 | 57 | 72        | 51             |

### TECHNICAL DATA

| Fan Model             | RPM  | 1 Phase KW | 240V Amps | 3 Phase KW | 415V Amps | dba @3M |
|-----------------------|------|------------|-----------|------------|-----------|---------|
| IMF-315-VO High Speed | 2450 | 0.3        | 1.32      |            |           | 61      |
| IMF-315-VO Low Speed  | 1780 | 0.2        | 0.90      |            |           | 51      |



**ECO DYNAMIC FANS PTY LTD**

296 South Gippsland Hwy,  
Dandenong South VIC 3175

P: 03 8578 5911

E: sales@ecodynamicfans.com.au

F: 03 8768 8529

www.ecodynamicfans.com.au